

SOCCER systems made to win



The people's sport

Already at the beginning of the last century, 'the dribbling game' with the sole rule of stopping the ball by hand and then moving it forward with the foot, was played all over England on lawns, sandy surfaces, or just on the street. It doesn't need further explanation that in these days, the game of soccer was a rough game with many injuries.

Nowadays the sport itself as well as the soccer surfaces have improved strongly. Artificial turf for football has gone through a real revolution since the 1960s. At first mainly was looked at the practical advantages of artificial turf compared to natural grass. Nowadays optimal playing characteristics in all weather conditions, preventing injuries and making players better are the most important principles of a soccer field.



**EDEL
GRASS**

edelgrass.com

100%  EU Quality – Made in The Netherlands

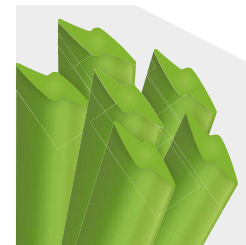
Edel Flashblade

Sand - SBR-filled
Built on lava stone sub-base

Edel Flashblade Performance-filled

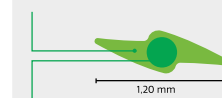
AFFORDABLE PERFORMER FOR MULTI-USE & INTENSIVE PLAY

Our Flashblade yarn fulfills the needs when a competitive soccer field system according to FIFA standards is required. With its 12.000 Dtex and matt finishing, Edel Flashblade perfectly covers performance infill and gives the field an outstanding natural look. Due to its flash-shaped yarn, the piles stay upright when played intensively.



12.000/6 DTEX

Flash shaped yarn



345 μm

Stabilizing core

- Bi-directional resilience
- Perfect wear and tear
- Natural bicolor



**roll width
400 cm¹**

Length according to installation schedule,
full length to cover width of field.



excellence

- Economic and durable soccer field**
- Flexible flash yarn shape**
- Good grip and torsion properties**
- Optimized ball roll speed and behavior**
- Certified systems**



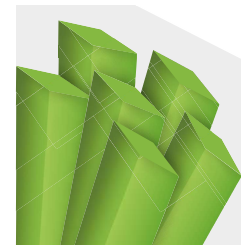
Edel Diamondblade

Sand – EPDM-filled
Built on E-layer sub-base

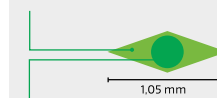
Edel Diamondblade Performance-filled

ROBUST & PROVEN SYSTEM FOR LONG-TERM PERFORMANCE

Our Diamondblade grass yarn is a solid performer. The diamond-shaped piles handle intensive play perfectly and spring back in position. If it is for soccer, hockey, or multisport, we offer a large range of sports systems with Diamondblade yarns. Diamondblade is certified for building FIFA Quality and Quality Pro soccer fields.



13.200/6^{DTEX}
Diamond shaped yarn



365 μm
Stabilizing core

- Resilient in all directions
- Minimal wear and tear
- Natural bicolor



excellence

Resilient sliding-friendly soccer field
Long-lasting workhorse
Good grip and torsion properties
Optimized ball roll speed and behavior
Certified systems



**roll width
400 cm¹**

Length according to
installation schedule,
full length to cover
width of field.



Edel Powerblade

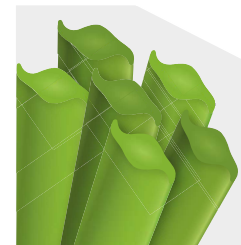
Sand - SBR-filled
Built on lava stone sub-base

Edel Powerblade

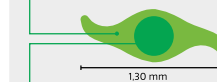
Performance-filled

PREMIUM FIELD FOR LONG-LASTING SPORT PERFORMANCE

Sometimes its all in the name. In this case, we couldn't agree more. Edel Powerblade is an extremely durable 410 micron propellor-shaped two-tone yarn. It is designed to build soccer systems that last and perform under the toughest conditions, while offering optimal playing properties, perfect ball behavior, and the lowest frictional resistance possible.



16.000/6^{DTEX}
Propellor shaped yarn



410 μm
Stabilizing core

- Bi-directional resilience
- Minimal wear and tear
- Natural bicolor



excellence

- Extreme durable and resilient soccer field
- Natural looking field surface
- Optimal grip and torsion properties
- Low frictional resistance
- Perfect ball behavior



roll width
400 cm¹

Length according to
installation schedule,
full length to cover
width of field.



MORE INFO +31 38 425 00 50 - info@edelgrass.com

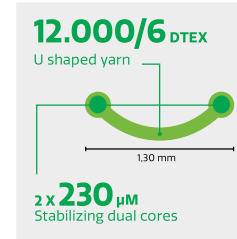
Edel Future DS

Sand - Cork-filled
Built on shockpad sub-base

Edel Future DS Performance-filled

OUR PROVEN STADIUM QUALITY & TOP USE PERFORMER

Our R&D department excelled when they designed the Edel Future DS yarn for performance-filled soccer fields. This is a truly unique yarn within the Edel soccer portfolio. Future DS has proven its status in soccer as well as in rugby for years and still is one of the most loved yarns for building stadium quality and FIFA certified soccer fields.



- Resilient U-Shaped yarn
- Good wear and tear
- Natural bicolor



excellence

- Proven resilient soccer field
- Very good esthetics
- Perfect grip and torsion properties
- Low frictional resistance
- Predictable ball behavior



roll width
400 cm¹

Length according to installation schedule, full length to cover width of field.



MORE INFO +31 38 425 00 50 - info@edelgrass.com

Edel Hybridblade

Edel Hybridblade soccer field
Sand – Cork-filled

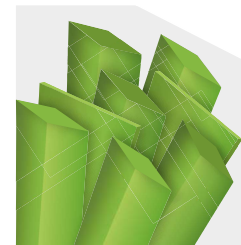


Edel Hybridblade

Performance-filled

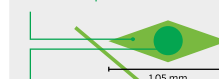
MAINTENANCE-FRIENDLY FIELD WITH NATURAL ESTHETICS

A mixture of diamond shaped yarns and tape. When a soccer field has to have good esthetics besides excellent performing capabilities, Edel Hybridblade delivers. It offers perfect conditions for cork-filled systems. The combined yarns and a high Dtex of 18.200/7, make sure that the infill stays in place and excellent wear and tear is provided. On top of that, Edel Hybridblade offers a maintenance-friendly soccer system.



18.200/7^{DTEX}

Diamond shaped yarn
+ 5 mm tape



365^{µM}
Stabilizing core

- Dual-shape resilience
- Eliminates infill splash
- Natural tricolor



excellence

- Extreme durable and resilient soccer field**
- Natural looking field surface**
- Optimal grip and torsion properties**
- Low frictional resistance**
- Perfect ball behavior**

edelgrass.com



roll width
400 cm¹

Length according to
installation schedule,
full length to cover
width of field.



MORE INFO

Newcastle – United Kingdom

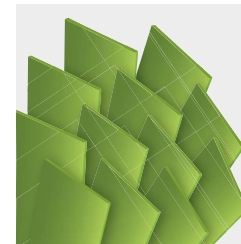
Edel soccer XP 40 Goals project
Sand – SBR – filled

Edel XP

Performance-filled

PROVEN SOLUTION FOR INTENSE USE AND SMALL SIZE FIELDS

Edel XP is a premium quality soccer system specially designed for mini-pitches and mainly used for 5-a-side soccer fields. The original Thiolon XP Pro yarn combined with the reinforced Thiobac backing is built as a sand SBR-filled system. The combination protects the field against fast turning and intense use, whilst offering long-life pleasant playing characteristics.



11.000/1^{DTEX}

Fibrillated PE tape

100^{μm}

- Fibrillated PE tape
- Sand SBR-filled system
- Built on shockpad
- Natural color
- Available with extra reinforced backing for Cruyff Courts.



excellence

Robust for soccer fields
Ideal for 5-a-side
Magnificent wear resistance
Good grip and torsion
Realistic esthetics



roll width
400 cm¹

Length according to
installation schedule,
full length to cover
width of field.



MORE INFO +31 38 425 00 50 – info@edelgrass.com

Šiauliai Arena – Lithuania

Semi-permanent Edel Infill Free soccer field installed with Velcro seams

'INFILL-FREE' systems made to win



Skip the hassle Just play



excellence

- Lower maintenance costs
- No granulate performance infill
- Minimal cleaning efforts
- No static electricity
- Perfect draining capacities

An infill-free grass system offers a fair amount of all the playing characteristics found in performance-filled systems. They however come with a big advantage, which is the lack of performance infill such as SBR, TPE, EPDM and/or cork.

Not having to fill the system with granulate, only occasionally with stabilizing sand, leads to fast and affordable installing possibilities. Logically this also leads to a deduction of maintaining costs worth mentioning.

Edel Novum

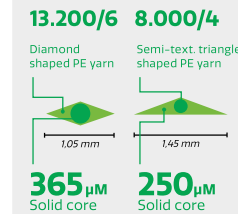
3D view



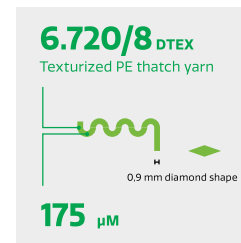
Edel Novum Infill-free

ECO-RESPONSIBLE INFILL-FREE AND NATURAL PERFORMING SOCCER SYSTEM

Edel Novum is a unique and true non-infill soccer system based on a new combination of three yarn types. Designed to perform under any condition with excellent ball roll and constant ball speed. Edel Novum offers built in shock absorption and a natural playing experience. Turning, passing and tackling are possible in a most natural way, preventing the risk of injury as much as possible and putting player safety as highest priority.



- **Diamond/triangle shaped yarns**
- **Texturized thatch yarn**
- **Natural tri-color green**
- **Glass fiber reinforced backing**
- **Elastic layer sub-base required**
- **Stabilizing sand recommended**
- **Din/EN/RAL approvals**



Length according to installation schedule, full length to cover width of field.



excellence

- Unique 3-yarn system**
- Safe and natural play**
- Built in shock absorption**
- Optimized ball roll**
- Constant ball speed**
- Reduced maintenance**



MORE INFO

+31 38 425 00 50 - info@edelgrass.com

Edel Texblade

3D view

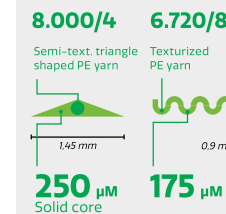


Edel TexBlade

Performance infill-free

TEXTURIZED LONG LASTING, TANGLED NON-DIRECTIONAL SOCCER GRASS.

Continued testing and development resulted in a new and improved performing soccer grass, without the need of infill granules. Edel Texblade! Produced with a glassfiber reinforced backing, which improves durability and makes it a resilient soccer system. Edel Texblade is built on an elastic layer and only needs some stabilizing infill sand. Edel Texblade can be applied in training facilities for intensive use as well as on league pitches.



- Triangle shaped yarn
- Texturized yarn
- Fresh bi-color green
- Glass fiber reinforced backing
- Elastic layer sub-base required
- Stabilizing sand required
- Din/EN/RAL approval



excellence

- Smooth playing surface
- High density full grass
- Unique mixture of yarns
- Natural playing characteristics
- Easy maintenance

> edelgrass.com



**roll width
400 cm¹**

Length according to installation schedule, full length to cover width of field.



MORE INFO +31 38 425 00 50 - info@edelgrass.com

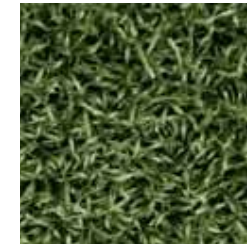
Siegen – Germany

Edel Topblade NDR Infill-free soccer field

Edel Topblade NDR

Performance infill-free

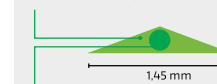
SOLID PERFORMING FIELD FOR URBAN SITES, MINI- AND TRAINING PITCHES



- Texturized monofilament
- Strong full grass
- Installed with stabilizing sand
- Performance infill-free
- Natural color



8.000/4 DTEX
Triangle shaped texturized monofilament yarn



235 µm
Stabilizing core



excellence

- Robust playing surface
- Most weather conditions
- Ideal for intense use
- Good ball behaviour
- Optimized grip and torsion



roll width
400 cm¹

Length according to installation schedule, full length to cover width of field.



MORE INFO +31 38 425 00 50 – info@edelgrass.com

Edel Soccer 5 XP 2.0

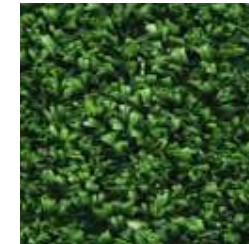
3D view



Edel Soccer 5 XP 2.0

Infill-free

DESIGNED FOR LIFELONG CONSISTENT PLAY



- Thermofixed **Knit-D-Knit**
- Fibrillated PE tape
- Reinforced backing
- Slide-friendly
- Natural bicolor



8.500/12 ^{dTEX}
 Diamond shaped thermofixed knit-d-knit yarn
 0,55 mm
205 ^{µM}
 Stabilizing core

11.000/1 ^{dTEX}
 Fibrillated PE tape
 12 mm tape
100 ^{µM}



excellence

- Excellent ball behavior
- Optional grip improving sand infill
- Consistent playing surface
- Robust against wear and tear
- Good drainage capacities

> edelgrass.com



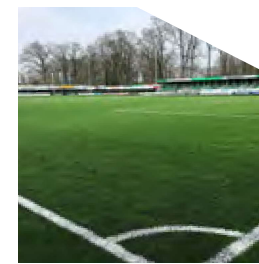
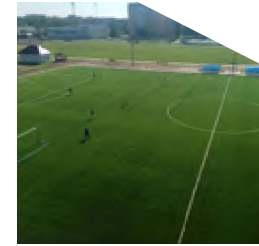
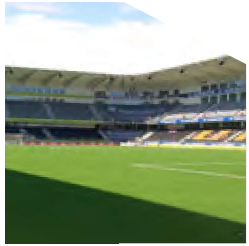
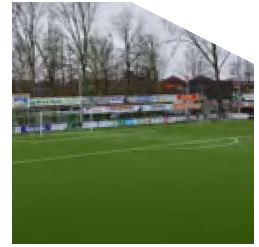
roll width 405 cm¹

Length according to installation schedule, full length to cover width of field.



MORE INFO +31 38 425 00 50 - info@edelgrass.com

Soccer fields around the WORLD



Marie Pampoen, Curaçao

A field *made to win* starts with *Hi...*

Do you want to examine the solutions in building or renovating your sport field together with Edel Grass? Just start with hello.

We're excited to get in touch and discuss all possibilities to make your field project a winner!

Contact Edel Grass at

+31 38 425 00 50 - info@edelgrass.com



or visit

> edelgrass.com

FC Minsk, Belarus

8 years in a row FIFA Certified

Edel Future DS soccer field

